

Cooling System

Section 7B - Water Flow Diagrams for Products without Emissions Control

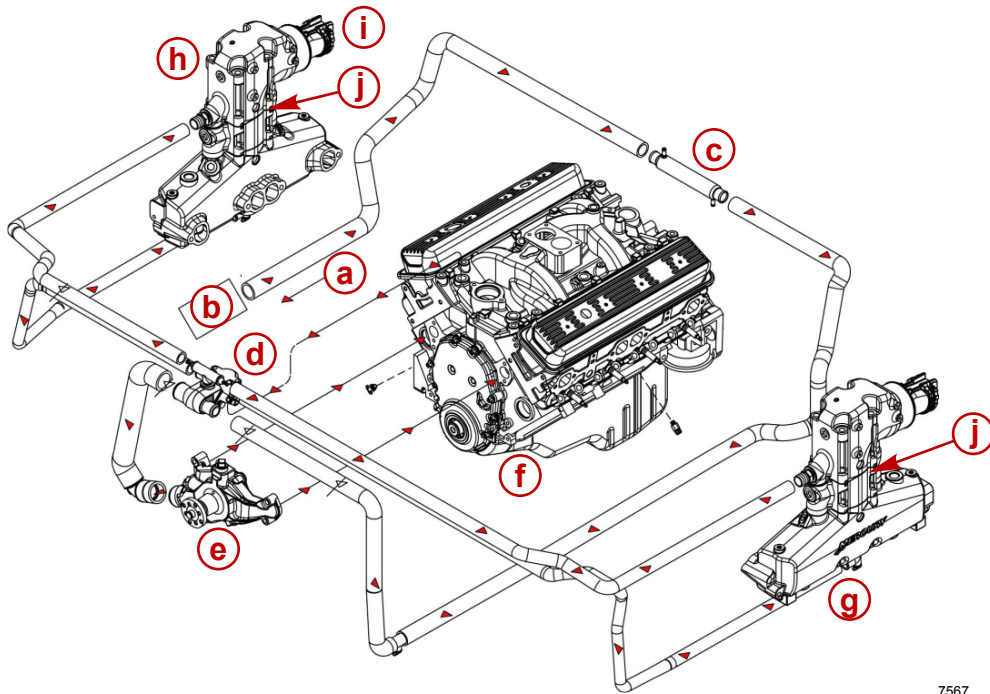
Table of Contents

5.7 TKS Inboard and Tow Sports 5.7 TKS.....	7B-2	Seawater Cooled Models.....	7B-5
Seawater Cooling System.....	7B-2	8.1 H.O. and Horizon 8.1.....	7B-6
5.7, 6.2 MPI and Horizon 5.7, 6.2.....	7B-3	Tow Sports 5.7 MPI.....	7B-7
Closed Cooled Inline Exhaust Models.....	7B-3	Scorpion 350, 377.....	7B-7
Closed Cooled V-drive Exhaust Models		Seawater Cooled Models.....	7B-8
.....	7B-4		

**7
B**

5.7 TKS Inboard and Tow Sports 5.7 TKS

Seawater Cooling System



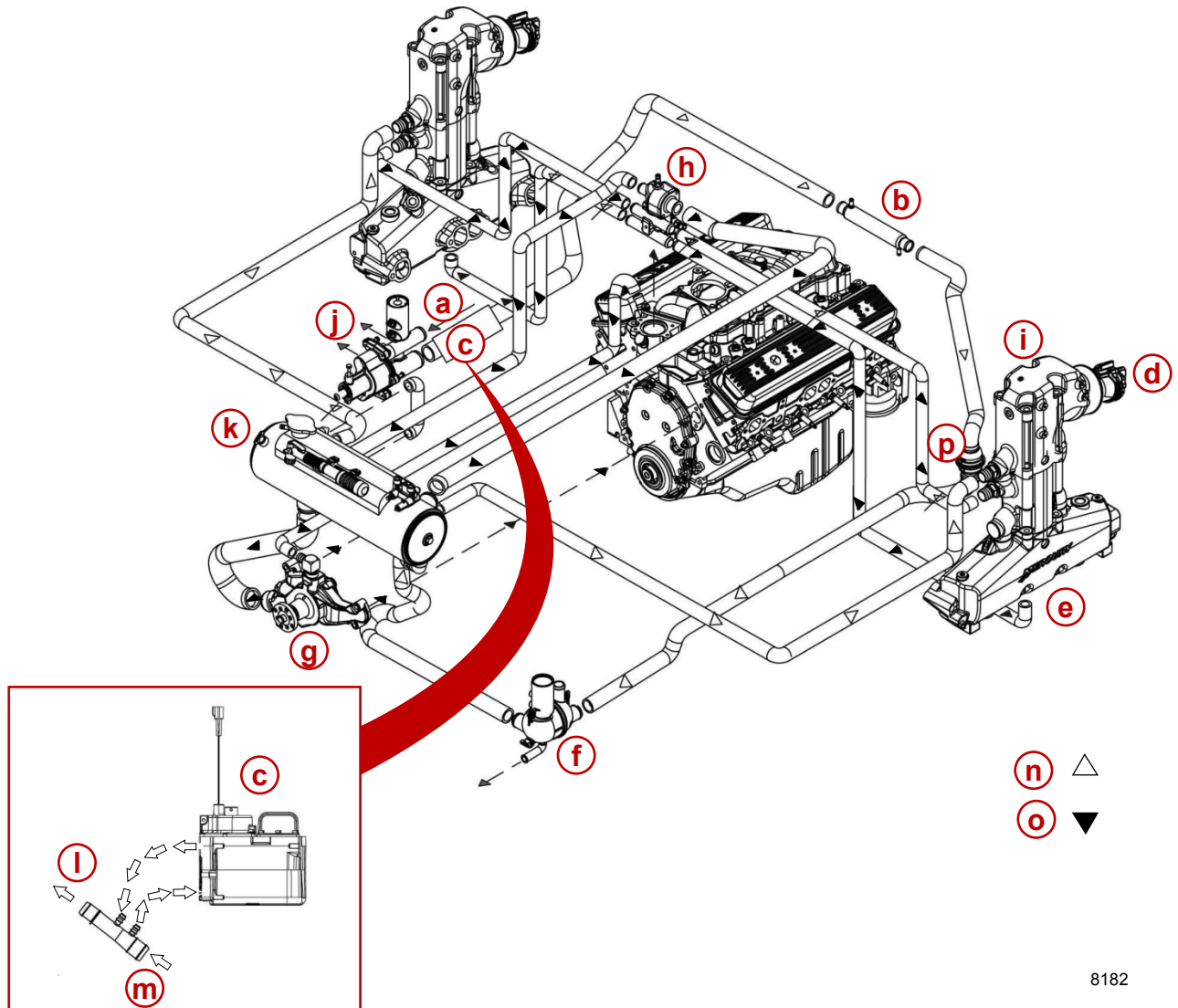
7567

- | | |
|--|--|
| a - Seawater inlet | f - Engine block and cylinder head assembly |
| b - Seawater pump | g - Exhaust manifold, typical |
| c - Transmission cooler | h - Exhaust elbow assembly, typical |
| d - Thermostat housing and cover assembly | i - Exhaust outlet |
| e - Engine water circulating pump | j - Warm riser |

5.7, 6.2 MPI and Horizon 5.7, 6.2

Closed Cooled Inline Exhaust Models

NOTE: Certain components in the following diagram may look different than on your particular power package, but the water flow paths remain similar on all engines.

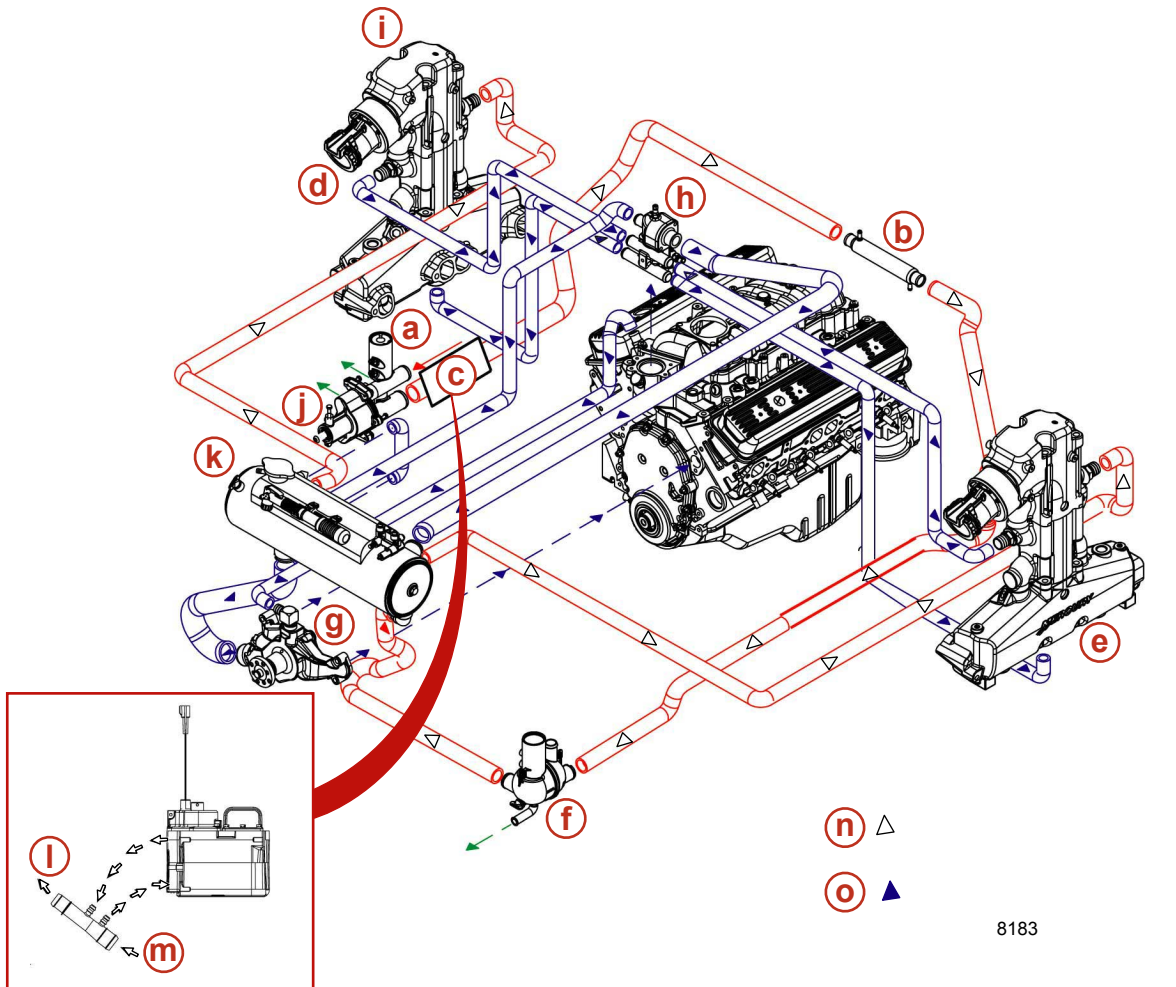


8182

- a** - Seawater inlet
- b** - Transmission cooler
- c** - Gen III Cool Fuel module
- d** - Exhaust and seawater outlet
- e** - Exhaust manifold
- f** - Distribution housing
- g** - Water circulating pump
- h** - Thermostat housing

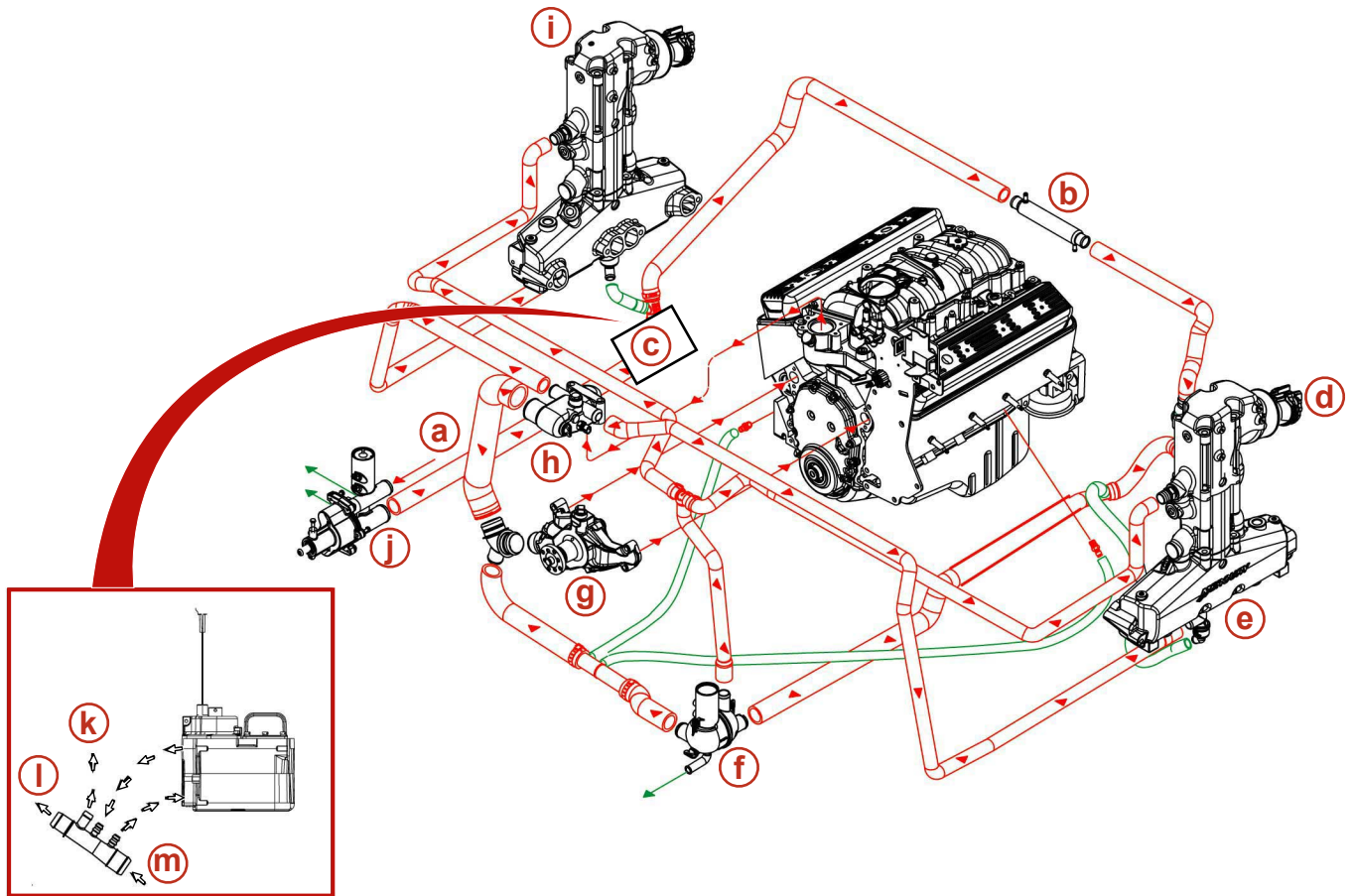
- i** - 14 degree exhaust elbow
- j** - Seawater pump
- k** - Heat exchanger
- l** - To transmission cooler
- m** - From seawater pump
- n** - Seawater
- o** - Ethylene glycol mix

Closed Cooled V-drive Exhaust Models



- | | |
|--|-----------------------------------|
| a - Seawater inlet | i - Exhaust elbow |
| b - Transmission cooler | j - Seawater pump |
| c - Gen III Cool Fuel module | k - Heat exchanger |
| d - Exhaust and seawater outlet | l - To transmission cooler |
| e - Exhaust manifold | m - From seawater pump |
| f - Distribution housing | n - Seawater |
| g - Water circulating pump | o - Ethylene glycol mix |
| h - Thermostat housing | |

Seawater Cooled Models

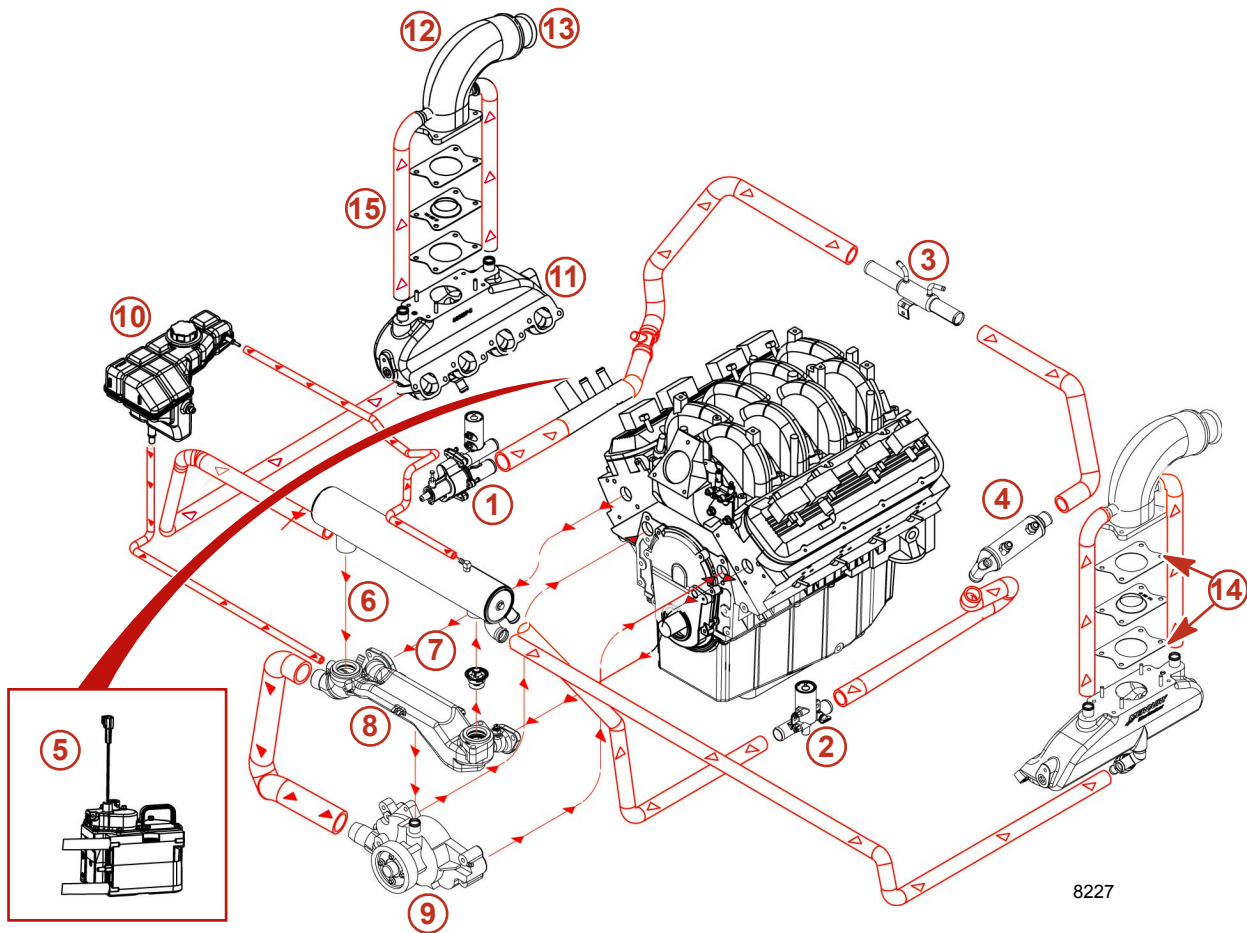


8184

- | | |
|--|--|
| a - Seawater inlet | h - Thermostat housing |
| b - Transmission cooler | i - Exhaust elbow |
| c - Gen III Cool Fuel module | j - Seawater pump |
| d - Exhaust and seawater outlet | k - Drain from starboard exhaust manifold |
| e - Exhaust manifold | l - To power steering cooler |
| f - Distribution housing | m - From seawater pump |
| g - Water circulating pump | |

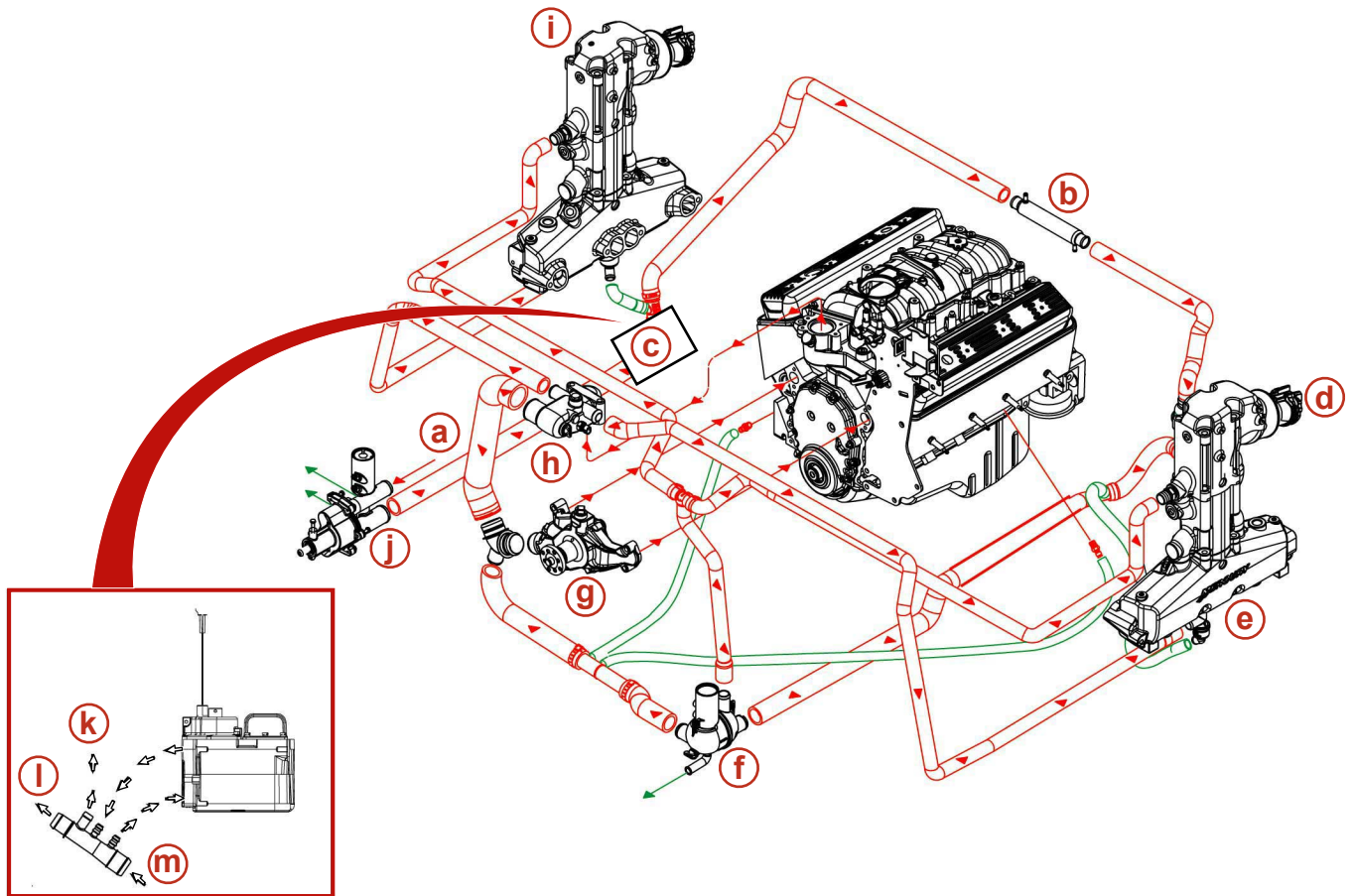
8.1 H.O. and Horizon 8.1

NOTE: Certain components in the following diagram may look different than on your particular power package, but the water and coolant flow paths remain similar on all engines.



- | | |
|--------------------------------|-------------------------------|
| 1 - Seawater pump/Air actuator | 9 - Water circulating pump |
| 2 - Air actuator | 10 - Coolant reservoir |
| 3 - Transmission cooler | 11 - Exhaust manifold |
| 4 - Oil cooler | 12 - Elbow |
| 5 - Gen III Cool Fuel Module | 13 - Water and exhaust outlet |
| 6 - Heat exchanger | 14 - Gasket (2 per side) |
| 7 - Thermostat | 15 - Turbulator (1 per side) |
| 8 - Crossover | |

Tow Sports 5.7 MPI



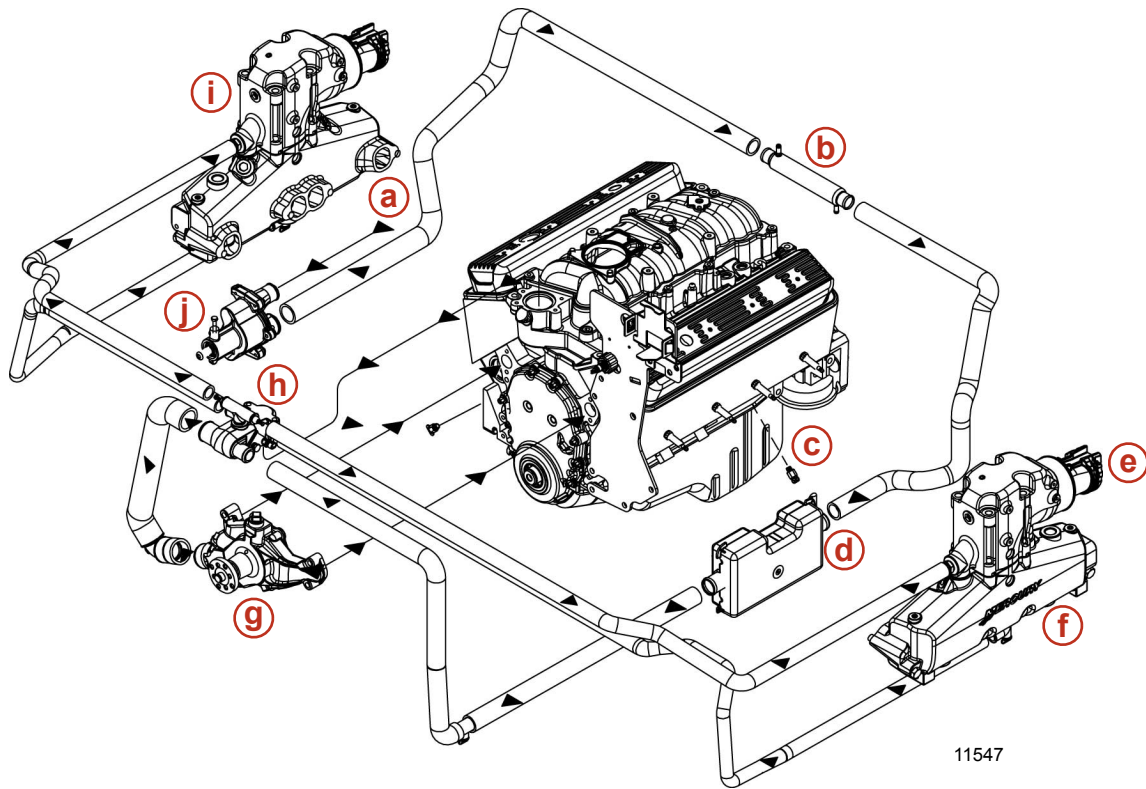
8184

- | | |
|--|--|
| a - Seawater inlet | h - Thermostat housing |
| b - Transmission cooler | i - Exhaust elbow |
| c - Gen III Cool Fuel module | j - Seawater pump |
| d - Exhaust and seawater outlet | k - Drain from starboard exhaust manifold |
| e - Exhaust manifold | l - To power steering cooler |
| f - Distribution housing | m - From seawater pump |
| g - Water circulating pump | |

Scorpion 350, 377

NOTE: Certain components in the following diagram may look different than on your particular power package, but the water flow paths remain similar on all engines.

Seawater Cooled Models



- | | |
|--------------------------------|-----------------------------------|
| a - Seawater inlet | f - Exhaust manifold |
| b - Transmission cooler | g - Water circulating pump |
| c - Drain plug | h - Thermostat housing |
| d - Fuel cooler | i - Exhaust elbow |
| e - Exhaust outlet | j - Seawater pump |