

# Important Information

## Section 1A - Important Information

### Table of Contents

Sales and Technical Assistance.....	1A-2	6.2 MPI.....	1A-11
Inside the U.S.A. ....	1A-2	Horizon 6.2.....	1A-12
Outside the U.S.A.....	1A-2	8.1 H.O.....	1A-13
Mercury MerCruiser Service Offices.....	1A-2	Horizon 8.1.....	1A-14
Mercury Precision Parts / Quicksilver Products		Tow Sports 5.7 TKS.....	1A-15
.....	1A-3	Tow Sports 5.7 MPI.....	1A-16
Factory Installed Options.....	1A-3	Scorpion 350.....	1A-17
Serial Number Decal Placement.....	1A-4	Scorpion 377.....	1A-18
California Regulations for 2007—Low-Permeation		Engine Specifications with Emissions Control	
Fuel Hose.....	1A-4	.....	1A-18
Emission Control Information.....	1A-4	Engine Specificaitons with Emissions Control	
International Regulations Compliance.....	1A-4	.....	1A-18
Emission Control Information Label.....	1A-5	5.7 MPI.....	1A-19
Emission Certification Star Label.....	1A-6	Horizon 5.7.....	1A-20
Engine Specifications without Emissions Control		8.1 H.O.....	1A-21
.....	1A-7	Horizon 8.1.....	1A-22
5.7 TKS Inboard.....	1A-8	Tow Sports 5.7 MPI.....	1A-23
5.7 MPI.....	1A-9	Scorpion 350.....	1A-24
Horizon 5.7.....	1A-10		

## Sales and Technical Assistance

Mercury MerCruiser employs a staff of highly trained specialists to assist you with any sales or technical issues that you might have. This includes a group of Product Application Engineers (PAEs) who specialize in the application of our product and are recognized throughout the industry for their expertise in this area. If you have an issue with the application of our product that cannot be resolved over the telephone, an PAE can be scheduled to assist you at your facility. All requests for assistance should be directed to:

### Inside the U.S.A.

Mercury MerCruiser  
3003 N. Perkins Rd.  
Stillwater,, OK 74075  
Quality/Service Support

(405) 743-6555  
Fax (405) 743-6570

Sales or Field Sales Technical Support

(405) 743-6505  
Fax (405) 743-6560

### Outside the U.S.A.

Contact your Distribution Center or Distributor.

### Mercury MerCruiser Service Offices

For assistance, call, fax, or write. Please include your daytime telephone number with mail and fax correspondence.

United States		
Telephone	(405) 743-6555	Mercury MerCruiser 3003 N. Perkins Road Stillwater, OK 74074
Fax	(405) 743-6570	
Website	www.mercurymarine.com	

Canada		
Telephone	(905) 567-6372	Mercury Marine Ltd. 2395 Meadowpine Blvd. Mississauga, Ontario L5N 7W6 Canada
Fax	(905) 567-8515	

Australia, Pacific		
Telephone	(61) (3) 9791-5822	Mercury Marine Australia 132-140 Frankston Road Dandenong, Victoria 3164 Australia
Fax	(61) (3) 9793-5880	

Europe, Middle East, Africa		
Telephone	(32) (87) 32 • 32 • 11	Marine Power — Europe, Inc. Parc Industriel de Petit-Rechain B-4800 Verviers, Belgium
Fax	(32) (87) 31 • 19 • 65	

<b>Mexico, Central America, South America, Caribbean</b>		
Telephone	(954) 744-3513	Mercury Marine 11650 Interchange Circle North Miramar, FL 33025 U.S.A.
Fax	(954) 744-3535	
<b>Japan</b>		
Telephone	81-053-423-2500	Mercury Marine — Japan Anshin-cho 283-1 Hamamatsu Shizuoka-ken, Japan 435-0005 Japan
Fax	81-053-423-2510	
<b>Asia, Singapore</b>		
Telephone	5466160	Mercury Marine Singapore 72 Loyang Way Singapore, 508762
Fax	5467789	

## Mercury Precision Parts / Quicksilver Products

A complete line of Quicksilver Accessories (remote controls, instrumentation, exhaust and cooling system components, etc.) are available from Mercury Precision Parts to meet your boat rigging needs. These accessories have been carefully designed for compatibility with Mercury MerCruiser products, providing unsurpassed quality and performance. Any warranty problems that may occur will be quickly and conveniently handled, using the same warranty system as used for standard Mercury products. A complete listing of all of the latest accessories can be found in the Mercury Precision Parts and Accessories Guide. Many of these accessories are covered under the related system sub-sections following.

The following address and telephone numbers can be contacted for ordering parts or obtaining technical assistance:

### **Inside the U.S.A.**

Mercury Marine  
Attn. Parts Department  
W6250 W. Pioneer Road  
P.O. Box 1939  
Fond du Lac, WI 54935-1939  
U.S.A.  
(920) 929-5589 or (800) 487-6372

### **Outside the U.S.A**

Contact your Distribution Center or Distributor.

## Factory Installed Options

Several accessories are also available as factory installed options from Mercury MerCruiser, including (but not limited to) those listed. These factory options avoid the problems and costs associated with installing them in your facility. Contact your sales representative for a list of the latest options.

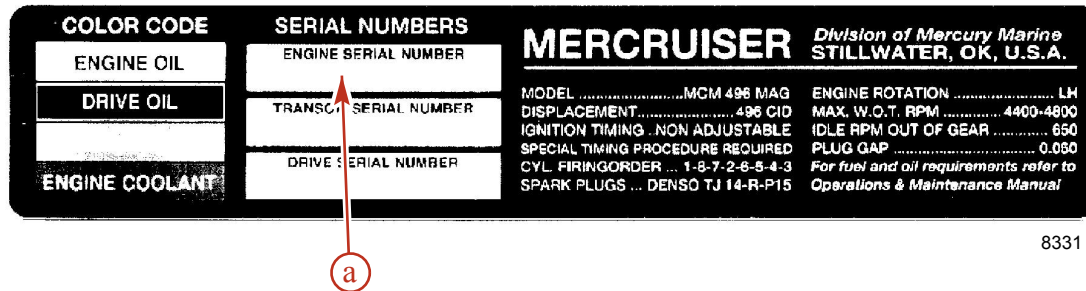
- Closed Cooling
- Exhaust Risers
- Propeller Shaft Couplings
- Remote Oil Filter
- Air-Actuated Drain

## Serial Number Decal Placement

There are 3 sets of engine, transom assembly, and sterndrive serial number decal strips provided with each power package. One should be used for each of the following:

- Engine Specification Decal
- Warranty Registration Card
- Operation, Maintenance and Warranty Manual identification page

Affix engine serial number decal to specification / serial number decal.



**a** - Specification/serial number decal

## California Regulations for 2007—Low-Permeation Fuel Hose

### California Regulations for New 2007 and Later Spark-Ignition Inboard/Sterndrive Pleasurecraft

(3) Requirements of engine manufacturers and boat manufacturers under Option 2 and using Low Permeation Fuel Line Hose:

(A) Each manufacturer that chooses Option 2 must provide written instructions, as part of the installation materials provided to purchasers of the engine, to use Low Permeation fuel Line Hose for the primary Fuel line connecting the fuel tank to the engine of any boat that is manufactured for sale, sold, or offered for sale in California, or that is introduced, delivered or imported into California for introduction into commerce.

(B) Each boat manufactured must install Low Permeation Fuel Line Hose for the primary Fuel line connecting the fuel tank to the engine of any boat that is manufactured for sale, sold, or offered for sale in California that uses an engine from a manufacturer that chooses Option 2.

Low Permeation Fuel Line Hose is USCG Type A1-15, defined as not exceeding 15 g/m<sup>2</sup>/24 h with CE10 fuel at 23° C as specified in SAE J 1527—Marine Fuel Hoses.

## Emission Control Information

### International Regulations Compliance

In an effort to support your international business, MerCruiser spends considerable resources each year keeping our products in compliance with international regulations. A dedicated Regulations Group at MerCruiser is devoted to ensuring that our products meet the host of regulatory requirements that cover our product throughout the world. This includes compliance with the following regulations and standards:



- ABYC (American Boat and Yacht Council).
- USCG (U.S. Coast Guard).
- SAE (Society of Automotive Engineers).
- ISO (International Standards Organization).

- CARB (California Air Resources Board).
- EU (European Union).
- SAV (Schweizer Abgas Vorschriften—Swiss Gas Regulations).
- JCI (Japanese Craft Inspection).

### Emission Control Information Label

A tamper-resistant Emission Control Information label is affixed in a visible location to the engine at time of manufacture by Mercury MerCruiser. In addition to the required emissions statement, the label lists the engine serial number, family, STD (emission standard/level), date of manufacture (month, year), and the engine displacement. Please note that the low emissions certification will not affect the fit, function, or performance of the engines. Boatbuilders and dealers may not remove the label or the part it is affixed to before sale. If modifications are necessary, contact Mercury MerCruiser about the availability of replacement decals before proceeding.


**NOTE:** When the CE mark is present in the lower right corner of the Emission Control Information Label on the engine, the Declaration of Conformance applies. Refer to the front page of this manual for further information.

		EMISSION CONTROL INFORMATION		
THIS ENGINE CONFORMS TO XXXX CALIFORNIA EMISSION REGULATIONS FOR SPARK IGNITION MARINE ENGINES REFER TO OWNER'S MANUAL FOR MAINTENANCE SPECIFICATIONS AND ADJUSTMENTS				
SERIAL #	XXXXXXX	D.O.M.	MMM YYYY	
FAMILY	XXXXXXXXXXXX	DISP	X.XL	
STD.	XX.X g/kW-hr			

31656

#### Emission Control Label—California Emissions—Compliant

- "SERIAL#"—Engine Serial Number
- "FAMILY"—Engine Family
- "STD."—Emissions Standard
- "D.O.M."—Date of Manufacture
- "DISP"—Piston Displacement

		EMISSION CONTROL INFORMATION		
<b>NOT FOR SALE IN CALIFORNIA</b>				
REFER TO OWNER'S MANUAL FOR MAINTENANCE SPECIFICATIONS AND ADJUSTMENTS				
SERIAL #	XXXXXXX	D.O.M.	MMM YYYY	
FAMILY	XXXXXXXXXXXX	DISP	X.XL	
STD.	XX.X g/kW-hr			

31657

#### Emission Control Label—Not for Sale in California

- "SERIAL#"—Engine Serial Number
- "FAMILY"—Engine Family
- "STD."—Emissions Standard

## Important Information

---

"D.O.M."—Date of Manufacture

"DISP"—Piston Displacement

### OWNER RESPONSIBILITY

The operator must have routine engine maintenance performed to maintain emission levels within prescribed certification standards.

The operator may not modify the engine in any manner that alters the horsepower or allows emissions levels to exceed their factory specifications.

### Emission Certification Star Label

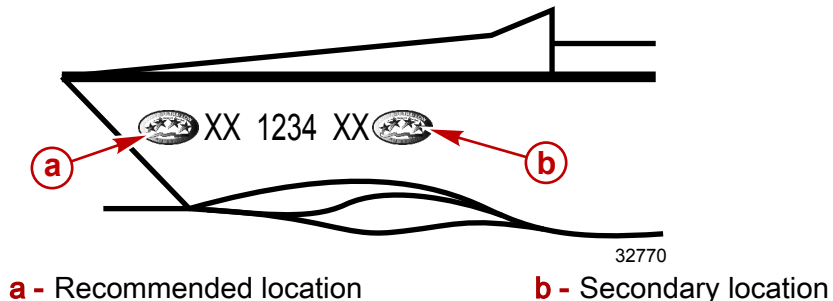
Your boat is labeled on the hull with one of the following star labels. The Symbol for Cleaner Marine Engines Means:





1. Cleaner Air and Water - for a healthier lifestyle and environment.
2. Better Fuel Economy - burns up to 30-40 percent less gas and oil than conventional carbureted two-stroke engines, saving money and resources.
3. Longer Emission Warranty - Protects consumer for worry free operation.

Beginning January 1, 2003, one Three-Star or Four-Star label will be included with each factory-certified Mercury MerCruiser engine.

All Mercury MerCruiser engines (500 hp and below) will have a Three-Star Ultra Low Emission rating or Four-Star Super Ultra Low Emission rating. The Star label identifies that these engines meet the California Air Resources Board's Sterndrive and Inboard marine engine 2007 and later exhaust emission standards. Engines meeting these standards have 65-90% lower emissions than One-Star – Low Emissions engines.

The Star label will be affixed on the left side of the hull as shown.



<b>One Star - Low emission</b>	
	<p>The one-star label identifies personal watercraft, outboard, sterndrive and inboard engines that meet the Air Resources Board's Personal Watercraft and Outboard marine engine 2001 exhaust emission standards. Engines meeting these standards have 75% lower emissions than conventional carbureted two-stroke engines. These engines are equivalent to the U.S. EPA's 2006 standards for marine engines.</p>
<b>Two Stars - Very Low emission</b>	
	<p>The two-star label identifies personal watercraft, outboard, sterndrive and inboard engines that meet the Air Resources Board's Personal Watercraft and Outboard marine engine 2004 exhaust emission standards. Engines meeting these standards have 20% lower emissions than One Star - Low-Emission engines.</p>
<b>Three Stars - Ultra Low emission</b>	
	<p>The three-star label identifies engines that meet the Air Resources Board's Personal Watercraft and Outboard marine engine 2008 exhaust emission standards or the Sterndrive and Inboard marine engine 2003 exhaust emission standards. Engines meeting these standards have 65% lower emissions than One Star - Low Emission engines.</p>
<b>Four Stars - Super Ultra Low emission</b>	
	<p>The Four Star label identifies engines that meet the Air Resources Board's Sterndrive and Inboard marine engine 2009 exhaust emission standards. Personal Watercraft and Outboard marine engines may also comply with these standards. Engines meeting these standards have 90% lower emissions than One Star - Low Emission engines.</p>

## Engine Specifications without Emissions Control

**NOTE:** Performance specifications are obtained and corrected in accordance with SAE J1228/ISO 8665 Crankshaft Power.

All measurements are taken with the engine at normal operating temperature.

RPM range is measured using an accurate service tachometer with the engine at normal operating temperatures.

Oil pressure must be checked with the engine at normal operating temperature.

## 5.7 TKS Inboard

<b>Propshaft power</b>	194 kw (260 hp)
<b>Displacement</b>	5.7 L (350 cid)
<b>Configuration cylinders</b>	V-8
<b>Bore x Stroke</b>	102 mm x 88.4 mm (4.00 in. x 3.48 in.)
<b>Compression ratio</b>	9.4:1
<b>Fuel system</b>	2-barrel carburetor
<b>Ignition system</b>	Thunderbolt 5 digital
<b>Alternator amp. (hot/cold)</b>	72 A/65 A
<b>WOT RPM range</b>	4200-4600
<b>Rev limiter RPM</b>	4750
<b>Idle RPM (neutral)</b>	650
<b>Minimum oil pressure at 2000 RPM</b>	207-483 kPa (30-70 psi)
<b>Minimum oil pressure at idle</b>	28 kPa (4 psi)
<b>Thermostat (seawater cooled models)</b>	71° C (160° F)
<b>Thermostat (closed cooled models)</b>	77° C (170° F)
<b>Timing</b>	10° BTDC
<b>Firing order</b>	1-8-4-3-6-5-7-2
<b>Closed cooling</b>	Kit
<b>Remote oil line</b>	N/A
<b>Audio warning system</b>	Standard
<b>Water drain system</b>	Multipoint drain system
<b>Flush system</b>	Kit
<b>50-amp circuit breaker</b>	Standard
<b>Optional riser kits</b>	43 mm (1.7 in.) 76 mm (3 in.) 152 mm (6 in.)
<b>Exhaust Elbows</b>	Cast iron with EDP and paint
<b>Minimum battery rating</b>	375 CCA/475 MCA/90 Ah
<b>Minimum battery rating for DTS models</b>	N/A
<b>Weight</b>	400 kg (888 lb)



## 5.7 MPI

<b>Propshaft power</b>	224 kw (300 hp)
<b>Displacement</b>	5.7 L (350 cid)
<b>Configuration cylinders</b>	V-8
<b>Bore x Stroke</b>	102 mm x 88.4 mm (4.00 in. x 3.48 in.)
<b>Compression ratio</b>	9.4:1
<b>Fuel system</b>	MPI
<b>Ignition system</b>	Digital
<b>Alternator amp. (hot/cold)</b>	72 A/65 A
<b>WOT RPM range</b>	4600–5000
<b>Rev limiter RPM</b>	5150
<b>Idle RPM (neutral)</b>	600
<b>Minimum oil pressure at 2000 RPM</b>	207–483 kPa (30–70 psi)
<b>Minimum oil pressure at idle</b>	28 kPa (4 psi)
<b>Thermostat (seawater cooled models)</b>	71° C (160° F)
<b>Thermostat (closed cooled models)</b>	77° (170° F)
<b>Timing</b>	8° BTDC
<b>Firing order</b>	1–8–4–3–6–5–7–2
<b>Closed cooling</b>	Optional
<b>Remote oil line</b>	Standard
<b>Audio warning system</b>	Standard
<b>Water drain system</b>	Multipoint Drain system standard Air actuated water drain for closed cooled models
<b>Flush kit</b>	Standard
<b>50-amp circuit breaker</b>	Standard
<b>Optional riser kits</b>	43 mm (1.7 in.) 76 mm (3 in.) 152 mm (6 in.)
<b>Exhaust Elbows</b>	Cast iron with EDP and paint
<b>Minimum battery rating</b>	750 CCA/950 MCA/180 Ah
<b>Minimum battery rating for DTS models</b>	800 cca / 1000 mca / 190 Ah
<b>Weight</b>	390kg (860 lb)

## Horizon 5.7

<b>Propshaft power</b>	224 kw (300 hp)
<b>Displacement</b>	5.7 L (350 cid)
<b>Configuration cylinders</b>	V-8
<b>Bore x Stroke</b>	102 mm x 88.4 mm (4.00 in. x 3.48 in.)
<b>Compression ratio</b>	9.4:1
<b>Fuel system</b>	MPI
<b>Ignition system</b>	Digital
<b>Alternator amp. (hot/cold)</b>	72 A/65 A
<b>WOT RPM range</b>	4600-5000
<b>Rev limiter RPM</b>	5150
<b>Idle RPM (neutral)</b>	600
<b>Minimum oil pressure at 2000 RPM</b>	207-483 kPa (30-70 psi)
<b>Minimum oil pressure at idle</b>	28 kPa (4 psi)
<b>Thermostat (seawater cooled models)</b>	71° C (160° F)
<b>Thermostat (closed cooled models)</b>	77° (170° F)
<b>Timing</b>	8° BTDC
<b>Firing order</b>	1-8-4-3-6-5-7-2
<b>Closed cooling</b>	Standard
<b>Remote oil line</b>	Standard
<b>Audio warning system</b>	Standard
<b>Water drain system</b>	Air actuated water drain
<b>Flush kit</b>	Standard
<b>50-amp circuit breaker</b>	Standard
<b>Optional riser kits</b>	43 mm (1.7 in.) 76 mm (3 in.) 152 mm (6 in.)
<b>Exhaust Elbows</b>	Cast iron with EDP and paint
<b>Minimum battery rating</b>	750 CCA/950 MCA/80 Ah
<b>Minimum battery rating for DTS models</b>	800 CCA/1000 MCA/190 Ah
<b>Weight</b>	427 kg (948 lb)

## 6.2 MPI

<b>Propshaft power</b>	239 kw (320 hp)
<b>Displacement</b>	6.2 L (377 cid)
<b>Configuration cylinders</b>	V-8
<b>Bore x Stroke</b>	102 mm x 95.3 mm (4.00 in. x 3.75 in.)
<b>Compression ratio</b>	9.0:1
<b>Fuel system</b>	MPI
<b>Ignition system</b>	Digital
<b>Alternator amp. (hot/cold)</b>	72 A/65 A
<b>WOT RPM range</b>	4600–5000
<b>Rev limiter RPM</b>	5150
<b>Idle RPM (neutral)</b>	600
<b>Minimum oil pressure at 2000 RPM</b>	207–483 kPa (30–70 psi)
<b>Minimum oil pressure at idle</b>	28 kPa (4 psi)
<b>Thermostat (seawater cooled models)</b>	71° C (160° F)
<b>Thermostat (closed cooled models)</b>	77 ° ( 170° F)
<b>Timing</b>	8° BTDC
<b>Firing order</b>	1–8–4–3–6–5–7–2
<b>Closed cooling</b>	Optional
<b>Audio warning system</b>	Standard
<b>Water drain system</b>	Multipoint drain system is standard Air actuated water drain for closed cooled models
<b>Flush kit</b>	Standard
<b>50-amp circuit breaker</b>	Standard
<b>Optional riser kits</b>	43mm (1.7 in.) 76 mm (3 in.) 152 mm (6 in.)
<b>Minimum battery rating</b>	750 CCA/950 MCA/180 Ah
<b>Minimum battery rating for DTS models</b>	800 CCA1000 MCA/190 Ah
<b>Weight</b>	390 kg (860 lb) (with down angle transmission)

## Horizon 6.2

<b>Propshaft power</b>	239 kw (320 hp)
<b>Displacement</b>	6.2 L (377 cid)
<b>Configuration cylinders</b>	V-8
<b>Bore x Stroke</b>	102 mm x 95.3 mm (4.00 in. x 3.75 in.)
<b>Compression ratio</b>	9.0:1
<b>Fuel system</b>	MPI
<b>Ignition system</b>	Digital
<b>Alternator amp. (hot/cold)</b>	72 A/65 A
<b>WOT RPM range</b>	4600–5000
<b>Rev limiter RPM</b>	5150
<b>Idle RPM (neutral)</b>	600
<b>Minimum oil pressure at 2000 RPM</b>	207–483 kPa (30–70 psi)
<b>Minimum oil pressure at idle</b>	28 kPa (4 psi)
<b>Thermostat (seawater cooled models)</b>	71° C (160° F)
<b>Thermostat (closed cooled models)</b>	77 ° ( 170° F)
<b>Timing</b>	8° BTDC
<b>Firing order</b>	1–8–4–3–6–5–7–2
<b>Closed cooling</b>	Standard
<b>Audio warning system</b>	Standard
<b>Water drain system</b>	Air actuated water drain
<b>Flush kit</b>	Standard
<b>50-amp circuit breaker</b>	Standard
<b>Optional riser kits</b>	43mm (1.7 in.) 76 mm (3 in.) 152 mm (6 in.)
<b>Minimum battery rating</b>	750 CCA/950 MCA/180 Ah
<b>Minimum battery rating for DTS models</b>	800 CCA/1000 MCA/190 Ah
<b>Weight</b>	390 kg (860 lb) (with down angle transmission)

## 8.1 H.O.

<b>Propshaft power</b>	313 kw (420 hp)
<b>Displacement</b>	8.1 L (496 cid)
<b>Configuration cylinders</b>	V-8
<b>Bore x Stroke</b>	108 mm x 111 mm (4.25 in. x 4.38 in.)
<b>Compression ratio</b>	9.1:1
<b>Fuel system</b>	MPI
<b>Ignition system</b>	Distributorless
<b>Alternator amp. (hot/cold)</b>	72 A/65 A
<b>WOT RPM range</b>	4400-4800
<b>Rev limiter RPM</b>	4950
<b>Idle RPM (neutral)</b>	650
<b>Minimum oil pressure at 2000 RPM</b>	431 kPa (60 psi)
<b>Minimum oil pressure at idle</b>	207 kPa (30 psi)
<b>Thermostat (closed cooled models)</b>	77° C (170° F)
<b>Timing</b>	N/A
<b>Firing order</b>	1-8-7-2-6-5-4-3
<b>Closed cooling</b>	Standard
<b>Audio warning system</b>	Standard
<b>Water drain system</b>	Air actuated water drain
<b>Flush kit</b>	Kit
<b>50-amp circuit breaker</b>	Standard
<b>Optional riser kits</b>	51mm (2 in.) 152 mm (6 in.) 203 mm (8 in.)
<b>Minimum battery rating</b>	750 CCA/950 MCA/180 Ah
<b>Minimum battery rating for DTS models</b>	800 CCA/1000 MCA/190 Ah
<b>Weight</b>	513 kg (1130 lb) (with down angle transmission)

## Horizon 8.1

<b>Propshaft power</b>	276 kw (370 hp)
<b>Displacement</b>	8.1 L (496 cid)
<b>Configuration cylinders</b>	V-8
<b>Bore x Stroke</b>	108 mm x 111 mm (4.25 in. x 4.38 in.)
<b>Compression ratio</b>	9.1:1
<b>Fuel system</b>	MPI
<b>Ignition system</b>	Distributorless
<b>Alternator amp. (hot/cold)</b>	72 A/65 A
<b>WOT RPM range</b>	4200-4600
<b>Rev limiter RPM</b>	4750
<b>Idle RPM (neutral)</b>	650
<b>Minimum oil pressure at 2000 RPM</b>	431 kPa (60 psi)
<b>Minimum oil pressure at idle</b>	207 kPa (30 psi)
<b>Thermostat (closed cooled models)</b>	77° C (170° F)
<b>Timing</b>	N/A
<b>Firing order</b>	1-8-7-2-6-5-4-3
<b>Closed cooling</b>	Standard
<b>Audio warning system</b>	Standard
<b>Water drain system</b>	Air actuated water drain
<b>Flush kit</b>	Kit
<b>50-amp circuit breaker</b>	Standard
<b>Optional riser kits</b>	51mm (2 in.), 152 mm (6 in.), 203 mm (8 in.)
<b>Minimum battery rating</b>	750 CCA/950 MCA/180 Ah
<b>Minimum battery rating for DTS models</b>	800 CCA/1000 MCA/190 Ah
<b>Weight</b>	513 kg (1130 lb) (with down angle transmission)

## Tow Sports 5.7 TKS

<b>Propshaft power</b>	201 kw (270 hp )
<b>Displacement</b>	5.7 L (350 cid)
<b>Configuration cylinders</b>	V-8
<b>Bore x Stroke</b>	102 mm x 88.4 mm (4.00 in. x 3.48 in.)
<b>Compression ratio</b>	9.4:1
<b>Fuel system</b>	2 barrel carburetor
<b>Ignition system</b>	Digital Thunderbolt 5
<b>Alternator amp. (hot/cold)</b>	72 A/65 A
<b>WOT RPM range</b>	4400-4800
<b>Rev limiter RPM</b>	4950
<b>Idle RPM (neutral)</b>	650
<b>Minimum oil pressure at 2000 RPM</b>	207-483 kPa (30-70 psi)
<b>Minimum oil pressure at idle</b>	28 kPa (4 psi)
<b>Thermostat (seawater cooled models)</b>	71° C (160° F)
<b>Timing</b>	10° BTDC
<b>Firing order</b>	1-8-4-3-6-5-7-2
<b>Closed cooling</b>	N/A
<b>Remote oil line</b>	N/A
<b>Audio warning system</b>	Standard
<b>Water drain system</b>	Multipoint drain system
<b>Flush kit</b>	Kit
<b>50-amp circuit breaker</b>	Standard
<b>S pipe exhaust</b>	N/A
<b>Optional riser kits</b>	43mm (1.7 in.)
<b>Minimum battery rating</b>	375 CCA/475 MCA/90 Ah
<b>Minimum battery rating for DTS models</b>	N/A
<b>Weight</b>	375 kg (833 lb)

## Tow Sports 5.7 MPI

<b>Propshaft power</b>	235 kw (315 hp )
<b>Displacement</b>	5.7 L (350 cid)
<b>Configuration cylinders</b>	V-8
<b>Bore x Stroke</b>	102 mm x 88.4 mm (4.00 in. x 3.48 in.)
<b>Compression ratio</b>	9.4:1
<b>Fuel system</b>	MPI
<b>Ignition system</b>	ECM 555
<b>Alternator amp. (hot/cold)</b>	72 A/65 A
<b>WOT RPM range</b>	4600-5000
<b>Rev limiter RPM</b>	5150
<b>Idle RPM (neutral)</b>	650
<b>Minimum oil pressure at 2000 RPM</b>	207-483 kPa (30-70 psi)
<b>Minimum oil pressure at idle</b>	28 kPa (4 psi)
<b>Thermostat (seawater cooled models)</b>	71° C (160° F)
<b>Timing</b>	8° BTDC
<b>Firing order</b>	1-8-4-3-6-5-7-2
<b>Closed cooling</b>	N/A
<b>Remote oil line</b>	N/A
<b>Audio warning system</b>	Standard
<b>Water drain system</b>	Multipoint drain system
<b>Flush kit</b>	Kit
<b>50-amp circuit breaker</b>	Standard
<b>S pipe exhaust</b>	Optional
<b>Optional riser kits</b>	43mm (1.7 in.)
<b>Minimum battery rating</b>	750 CCA/950 MCA/180 Ah
<b>Minimum battery rating for DTS models</b>	N/A
<b>Weight</b>	365 kg (813 lb)



## Scorpion 350

<b>Propshaft power</b>	246 kw (330 hp )
<b>Displacement</b>	5.7 L (350 cid)
<b>Configuration cylinders</b>	V-8
<b>Bore x Stroke</b>	102 mm x 88.4 mm (4.00 in. x 3.48 in.)
<b>Compression ratio</b>	9.4:1
<b>Fuel system</b>	MPI
<b>Ignition system</b>	ECM 555
<b>Alternator amp. (hot/cold)</b>	72 A / 65 A
<b>WOT RPM range</b>	4800–5200
<b>Rev limiter RPM</b>	5350
<b>Idle RPM (neutral)</b>	650
<b>Minimum oil pressure at 2000 RPM</b>	207–483 kPa (30–70 psi)
<b>Minimum oil pressure at idle</b>	41 kPa (6 psi)
<b>Thermostat (seawater cooled models)</b>	71° C (160° F)
<b>Timing</b>	8° BTDC
<b>Firing order</b>	1–8–4–3–6–5–7–2
<b>Closed cooling</b>	N/A
<b>Remote oil line</b>	Optional
<b>Audio warning system</b>	Standard
<b>Water drain system</b>	Multipoint drain system Air actuated water drain for closed cooled models
<b>Flush kit</b>	Kit
<b>50-amp circuit breaker</b>	Standard
<b>S pipe exhaust</b>	N/A
<b>Optional riser kits</b>	N/A
<b>Minimum battery rating</b>	750 CCA/950 MCA/180 Ah
<b>Minimum battery rating for DTS models</b>	N/A
<b>Weight</b>	373 kg (821 lb)

## Scorpion 377

Propshaft power	254 kw (340 hp )
Displacement	6.2 L (377 cid)
Configuration cylinders	V-8
Bore x Stroke	102 mm x 95.3 mm (4.00 in. x 3.75 in.)
Compression ratio	9.0:1
Fuel system	MPI
Ignition system	ECM 555
Alternator amp. (hot/cold)	72 A/65 A
WOT RPM range	4800-5200
Rev limiter RPM	5350
Idle RPM (neutral)	650
Minimum oil pressure at 2000 RPM	207-483 kPa (30-70 psi)
Minimum oil pressure at idle	41 kPa (6 psi)
Thermostat (seawater cooled models)	71° C (160° F)
Timing	8° BTDC
Firing order	1-8-4-3-6-5-7-2
Closed cooling	N/A
Remote oil line	Optional
Audio warning system	Standard
Water drain system	Multipoint drain system
Flush kit	Kit
50-amp circuit breaker	Standard
S pipe exhaust	N/A
Optional riser kits	N/A
Minimum battery rating	750 CCA/950 MCA/180 Ah
Minimum battery rating for DTS models	N/A
Weight	373 kg (821 lb)

## Engine Specifications with Emissions Control

### Engine Specifications with Emissions Control

**NOTE:** Performance specifications are obtained and corrected in accordance with SAE J1228/ISO 8665 Crankshaft Power.

All measurements are taken with the engine at normal operating temperature.

RPM range is measured using an accurate service tachometer with the engine at normal operating temperatures.

Oil pressure must be checked with the engine at normal operating temperature.

## 5.7 MPI

<b>Propshaft power</b>	224 kw (300 hp)
<b>Displacement</b>	5.7 L (350 cid)
<b>Configuration cylinders</b>	V8
<b>Bore x Stroke</b>	102 mm x 88.4 mm (4.00 in. x 3.48 in.)
<b>Compression ratio</b>	9.4:1
<b>Fuel system</b>	MPI
<b>Ignition system</b>	PCM 09 digital
<b>Alternator amp. (hot/cold)</b>	72 A (hot) 65 A (cold)
<b>WOT RPM range</b>	4800–5200
<b>Rev limiter RPM</b>	5350
<b>Idle RPM (neutral)</b>	600
<b>Minimum oil pressure at 2000 RPM</b>	207–483 kPa (30–70 psi)
<b>Minimum oil pressure at idle</b>	28 kPa (4 psi)
<b>Thermostat (seawater cooled models)</b>	71° C (160° F)
<b>Thermostat (closed cooled models)</b>	77° (170° F)
<b>Timing</b>	N/A
<b>Firing order</b>	1–8–4–3–6–5–7–2
<b>Closed cooling</b>	Optional
<b>Remote oil line</b>	Standard
<b>Audio warning system</b>	Standard
<b>Water drain system</b>	Multipoint Drain system standard Air actuated water drain for closed cooled models
<b>Flush kit</b>	Standard
<b>50-amp circuit breaker</b>	Standard
<b>Exhaust elbows</b>	Cast iron, EDP and paint
<b>Optional riser kits</b>	43 mm (1.7 in.), 102 mm (4 in.), 76 mm (3 in.), 152 mm (6 in.)
<b>Exhaust Elbows</b>	Cast iron with EDP and paint
<b>Minimum battery rating</b>	750 cca / 950 mca / 180 Ah
<b>Minimum battery rating for DTS models</b>	800 cca / 1000 mca / 190 Ah
<b>Weight</b>	312kg (910 lb)

## Horizon 5.7

<b>Propshaft power</b>	224 kw (300 hp)
<b>Displacement</b>	5.7 L (350 cid)
<b>Configuration cylinders</b>	V8
<b>Bore x Stroke</b>	102 mm x 88.4 mm (4.00 in. x 3.48 in.)
<b>Compression ratio</b>	9.4:1
<b>Fuel system</b>	MPI
<b>Ignition system</b>	PCM 09 digital
<b>Alternator Amps</b>	72 A (hot) 65 A (cold)
<b>WOT RPM range</b>	4600-5000
<b>Rev limiter RPM</b>	5150
<b>Idle RPM (neutral)</b>	600
<b>Minimum oil pressure at 2000 RPM</b>	207-483 kPa (30-70 psi)
<b>Minimum oil pressure at idle</b>	28 kPa (4 psi)
<b>Thermostat (seawater cooled models)</b>	71° C (160° F)
<b>Thermostat (closed cooled models)</b>	77° (170° F)
<b>Timing</b>	N/A
<b>Firing order</b>	1-8-4-3-6-5-7-2
<b>Closed cooling</b>	Standard
<b>Remote oil line</b>	Standard
<b>Audio warning system</b>	Standard
<b>Water drain system</b>	Air actuated water drain
<b>Flush kit</b>	Standard
<b>50-amp circuit breaker</b>	Standard
<b>Optional riser kits</b>	43 mm (1.7 in.), 102 mm (4 in.), 76 mm (3 in.), 152 mm (6 in.)
<b>Exhaust Elbows</b>	Cast iron with EDP and paint
<b>Minimum battery rating</b>	750 cca / 950 mca / 180 Ah
<b>Minimum battery rating for DTS models</b>	800 cca / 1000 mca / 190 Ah
<b>Weight</b>	452 kg (998 lb)

## 8.1 H.O.

<b>Propshaft power</b>	313 kw (420 hp)
<b>Displacement</b>	8.1 L (496 cid)
<b>Configuration cylinders</b>	V8
<b>Bore x Stroke</b>	108 mm x 111 mm (4.25 in. x 4.38 in.)
<b>Compression ratio</b>	9.1:1
<b>Fuel system</b>	MPI
<b>Ignition system</b>	PCM 09 digital
<b>Alternator Amps</b>	72 A (hot) 65 A (cold)
<b>WOT RPM range</b>	4400–4800
<b>Rev limiter RPM</b>	5150
<b>Idle RPM (neutral)</b>	675
<b>Minimum oil pressure at 2000 RPM</b>	431 kPa (60 psi)
<b>Minimum oil pressure at idle</b>	207 kPa (30 psi)
<b>Thermostat (closed cooled models)</b>	77° C (170° F)
<b>Timing</b>	N/A
<b>Firing order</b>	1–8–7–2–6–5–4–3
<b>Closed cooling</b>	Standard
<b>Audio warning system</b>	Standard
<b>Water drain system</b>	Air actuated water drain
<b>Flush kit</b>	Kit
<b>50-amp circuit breaker</b>	Standard
<b>Optional riser kits</b>	51mm (2 in.), 102 mm (4in.), 152 mm (6 in.), 203 mm (8 in.)
<b>Minimum battery rating</b>	750 cca / 950 mca / 180 Ah
<b>Minimum battery rating for DTS models</b>	800 cca / 1000 mca / 190 Ah
<b>Weight</b>	578 kg (1275 lb) (with down angle transmission)

## Horizon 8.1

<b>Propshaft power</b>	276 kw (370 hp)
<b>Displacement</b>	8.1 L (496 cid)
<b>Configuration cylinders</b>	V8
<b>Bore x Stroke</b>	108 mm x 111 mm (4.25 in. x 4.38 in.)
<b>Compression ratio</b>	9.1:1
<b>Fuel system</b>	MPI
<b>Ignition system</b>	PCM 09 digital
<b>Alternator Amps</b>	72 A (hot) 65 A (cold)
<b>WOT RPM range</b>	4200–4600
<b>Rev limiter RPM</b>	4950
<b>Idle RPM (neutral)</b>	675
<b>Minimum oil pressure at 2000 RPM</b>	431 kPa (60 psi)
<b>Minimum oil pressure at idle</b>	207 kPa (30 psi)
<b>Thermostat (closed cooled models)</b>	77° C (170° F)
<b>Timing</b>	N/A
<b>Firing order</b>	1–8–7–2–6–5–4–3
<b>Closed cooling</b>	Standard
<b>Audio warning system</b>	Standard
<b>Water drain system</b>	Air actuated water drain
<b>Flush kit</b>	Kit
<b>50-amp circuit breaker</b>	Standard
<b>Optional riser kits</b>	51mm (2 in.), 102 mm (4in.), 152 mm (6 in.), 203 mm (8 in.)
<b>Minimum battery rating</b>	750 cca / 950 mca / 180 Ah
<b>Minimum battery rating for DTS models</b>	800 cca / 1000 mca / 190 Ah
<b>Weight</b>	578 kg (1275 lb) (with down angle transmission)

## Tow Sports 5.7 MPI

<b>Propshaft power</b>	235 kw (315 hp )
<b>Displacement</b>	5.7 L (350 cid)
<b>Configuration cylinders</b>	V8
<b>Bore x Stroke</b>	102 mm x 88.4 mm (4.00 in. x 3.48 in.)
<b>Compression ratio</b>	9.4:1
<b>Fuel system</b>	MPI
<b>Ignition system</b>	PCM 09 digital
<b>Alternator Amps</b>	72 A (hot) 65 A (cold)
<b>WOT RPM range</b>	4800–5200
<b>Rev limiter RPM</b>	5350
<b>Idle RPM (neutral)</b>	650
<b>Minimum oil pressure at 2000 RPM</b>	207–483 kPa (30-70 psi)
<b>Minimum oil pressure at idle</b>	28 kPa (4 psi)
<b>Thermostat (seawater cooled models)</b>	71° C (160° F)
<b>Timing</b>	N/A
<b>Firing order</b>	1–8–4–3–6–5–7–2
<b>Closed cooling</b>	N/A
<b>Remote oil line</b>	Optional
<b>Audio warning system</b>	Standard
<b>Water drain system</b>	Multipoint drain system
<b>Flush kit</b>	Kit
<b>50-amp circuit breaker</b>	Standard
<b>Exhaust elbows</b>	Cast iron, EDP and paint
<b>S pipe exhaust</b>	Optional
<b>Optional riser kits</b>	43mm (1.7 in.)
<b>Minimum battery rating</b>	750 cca / 950 mca / 180 Ah
<b>Minimum battery rating for DTS models</b>	N/A
<b>Weight</b>	390 kg (863 lb)

## Scorpion 350

<b>Propshaft power</b>	246 kw (330 hp )
<b>Displacement</b>	5.7 L (350 cid)
<b>Configuration cylinders</b>	V8
<b>Bore x Stroke</b>	102 mm x 88.4 mm (4.00 in. x 3.48 in.)
<b>Compression ratio</b>	9.4:1
<b>Fuel system</b>	MPI
<b>Ignition system</b>	PCM 09 digital
<b>Alternator Amps</b>	72 A (hot) 65 A (cold)
<b>WOT RPM range</b>	4800–5200
<b>Rev limiter RPM</b>	5350
<b>Idle RPM (neutral)</b>	650
<b>Minimum oil pressure at 2000 RPM</b>	207–483 kPa (30–70 psi)
<b>Minimum oil pressure at idle</b>	41 kPa (6 psi)
<b>Thermostat (seawater cooled models)</b>	71° C (160° F)
<b>Timing</b>	N/A
<b>Firing order</b>	1–8–4–3–6–5–7–2
<b>Closed cooling</b>	N/A
<b>Remote oil line</b>	Optional
<b>Audio warning system</b>	Standard
<b>Water drain system</b>	Multipoint drain system Air actuated water drain for closed cooled models
<b>Flush kit</b>	Kit
<b>50-amp circuit breaker</b>	Standard
<b>Exhaust elbows</b>	Cast iron, EDP and paint
<b>S pipe exhaust</b>	N/A
<b>Optional riser kits</b>	N/A
<b>Minimum battery rating</b>	750 cca / 950 mca / 180 Ah
<b>Minimum battery rating for DTS models</b>	N/A
<b>Weight</b>	394 kg (871 lb.)